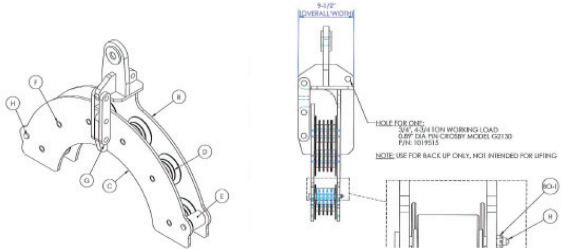


PRODUCT SPECIFICATION

SWH-A: 20T, DNV

Sheave, Single Control Line, Flatpacks & Umbilicals



PRODUCT DESCRIPTION

The Sheave is a device that hangs as high as possible in the derrick and serves as a guide to allow capillary tubes or TEC (Tubing Encapsulated Conductor) to efficiently be installed or removed from the completion pipe string.

Proper Sheave placement in the derrick is essential to minimize the control line approach angle in relation to the completion string. The smaller the approach angle allows the employee to attach control lines to the completion string with less chance of damaging the control lines.

BENEFITS & APPLICATIONS

- The sheave is designed with side entry loading and unloading capabilities and has six-rollers with a 44" radius.
- The sheave has guide pins and rollers incorporated along the outer radius to prevent tubes from coming out of the sheave if there is slack in the line.
- The roller wheels are profiled to prevent the tubes from getting stuck between the rollers and roller axels.
- The sheave is rated for a working load capacity of 40,000 lbs.
- To facilitate installation of sheaves in the derrick, the sheave is hung on a spreader bar (optional) that can accommodate up to four sheaves. All sheaves are attached to the spreader bar with shackles which have safety slings for backup fall protection.

GENERAL SPECIFICATIONS

Working Load Capacity	20 Ton
Dimensions	39"H x 54"L x 8.75"W
Radius	44"
Roller Size	3" Core x 2.5" W
Padeye Specs	DNV 2.22
Sheave Body Material	A-572 Gr. 50
Roller Bushings Material	17-4
No. of Bolts, Material	6, Grade 8
Shackle	Crosby, 25 Ton Rating
Roller Material	Nylatron

BlueFin
A GATE Energy Company

© 2021 BlueFin. All rights reserved. Sales of BlueFin products and services will be in accord solely with the terms and conditions contained in the contract between BlueFin and the customer.

www.bluefin.energy