

## PRODUCT SPECIFICATION

# EFHU-3

Electric Flush Heat Unit - 900 GPM

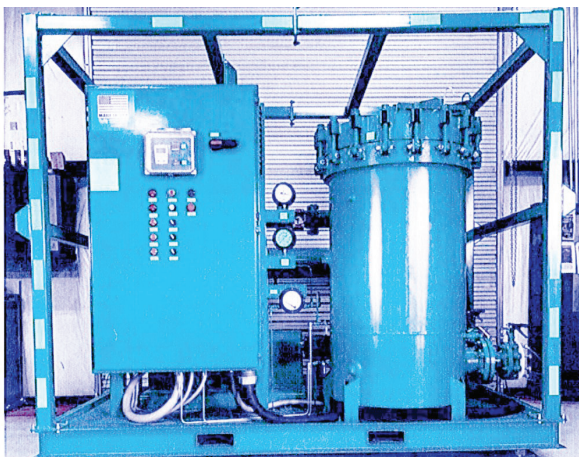
### PRODUCT DESCRIPTION

The Electric Flush and Heat Unit (EFHU) is everything needed for high velocity particulate removal applications all on one skid.

Includes a 12-element 640 Series filter Vessel, and a sight flow indicator to closely monitor parameters preventing flow disruptions.

### BENEFITS & APPLICATIONS

- Designed to be a stand-alone unit.
- Inlet Flange: 6" x 150#, Outlet Flange: 4" x 150#
- Process, Vacuum, and Pressure Differential Gauges for user-friendly application
- Forklift pockets for improved yard mobility
- Relief valve on gear pump
- Easy to operate butterfly valve purge and sample points.
- High temperature control modules with internal venting and indicator lights for safer operations.



BF-MKT-0291.0

### GENERAL SPECIFICATIONS

Variable Flow 300-900 GPM @  
80 PSI max

Electrical Classification NEMA 4 (NEMA  
7 Available for Offshore)

Immersion Heater 75 kW – 1 Circuit

Weight 6,700 lbs

Dimensions 8'H x 5'D x 9'W

### VFD REQUIREMENTS

480 V / 3 / 60 Hz – 124 Amps

### HEATER REQUIREMENTS

Heater – 1 Circuit Power Requirements:  
480 V / 3 / 60 Hz – 91 Amps (Total 215  
Amps with VFD & 1 Circuit at Full Load)

**BlueFin**  
A GATE Energy Company

© 2021 BlueFin. All rights reserved. Sales of BlueFin products and services will be in accord solely with the terms and conditions contained in the contract between BlueFin and the customer.

[www.bluefin.energy](http://www.bluefin.energy)