

## PRODUCT SPECIFICATION

# EFHU-2

Electric Flush Heat Unit - 500 GPM

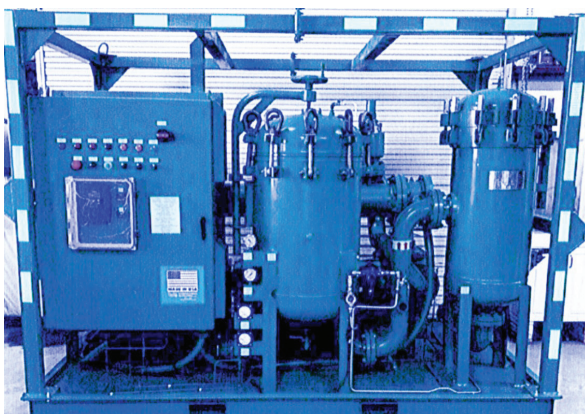
### PRODUCT DESCRIPTION

The Electric Flush and Heat Unit (EFHU) is everything needed for high velocity particulate removal applications all on one skid.

Includes a 5-element 636 Series filter Vessel with 4 basket #2 bag filters, and a sight flow indicator to closely monitor parameters preventing flow disruptions.

### BENEFITS & APPLICATIONS

- Designed to be a stand-alone unit.
- Inlet Flange: 6" x 150#, Outlet Flange: 4" x 150#
- Process, Vacuum, and Pressure Differential Gauges for user-friendly application
- Forklift pockets for improved yard mobility
- Relief valve on gear pump
- Easy to operate butterfly valve purge and sample points.
- High temperature control modules with internal venting and indicator lights for safer operations.



BF-MKT-0293.0

### GENERAL SPECIFICATIONS

Variable Flow	150-500 GPM @ 80 PSI max
---------------	-----------------------------

Electrical Classification	NEMA 4 (NEMA 7 Available for Offshore)
---------------------------	--

Immersion Heater	60 kW – 2 Circuit
------------------	-------------------

Weight	7,000 lbs
--------	-----------

Dimensions	7'H x 5'D x 9'W
------------	-----------------

### VFD REQUIREMENTS

480 V / 3 / 60 Hz – 96 Amps

### HEATER REQUIREMENTS

Heater – 1 Circuit Power Requirements:  
480 V / 3 / 60 Hz – 30Amps max (Total  
126 Amps with VFD)

Heater – 2 Circuits Power Requirements:  
480 V / 3 / 60 Hz – 50Amps max (Total  
176 Amps with VFD & 2 Circuits at Full  
Load)

**BlueFin**  
A GATE Energy Company

© 2021 BlueFin. All rights reserved. Sales of BlueFin products and services will be in accord solely with the terms and conditions contained in the contract between BlueFin and the customer.

[www.bluefin.energy](http://www.bluefin.energy)