

PRODUCT SPECIFICATION

EFHU-1

Electric Flush Heat Unit - 200 GPM

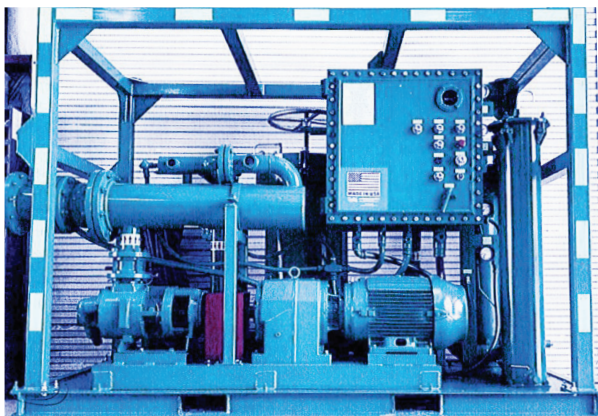
PRODUCT DESCRIPTION

The Electric Flush and Heat Unit (EFHU) is everything needed for high velocity particulate removal applications all on one skid.

Includes a 2-element 636 Series filter Vessel with triplex #2 bag filters, and a sight flow indicator to closely monitor parameters preventing flow disruptions.

BENEFITS & APPLICATIONS

- Designed to be a stand-alone unit.
- Inlet Flange: 3" x 150#, Outlet Flange: 2" x 150# .
- Process, Vacuum, and Pressure Differential Gauges for user-friendly application.
- Forklift pockets and lifting eyes for improved yard mobility.
- Relief valve on gear pump.
- Easy to operate butterfly valve purge and sample points.
- High temperature control modules with internal venting and indicator lights for safer operations.



BF-MKT-0292.0

GENERAL SPECIFICATIONS

Variable Flow	75-200 GPM @ 100 PSI max
Electrical Classification	NEMA 7
Immersion Heater	33 kW – 1 Circuit
Weight	4,235 lbs
Dimensions	7'H x 4'D x 8'W

SPECS

Max of 3 - Used for Motor Specs, Variable Frequency Drive Specs, Pump Specs etc.

HEATER REQUIREMENTS

Heater – 1 Circuit Power Requirements:
480 V / 3 Phase Power – 80 Amps (Full Load)

BlueFin
A GATE Energy Company

© 2021 BlueFin. All rights reserved. Sales of BlueFin products and services will be in accord solely with the terms and conditions contained in the contract between BlueFin and the customer.

www.bluefin.energy